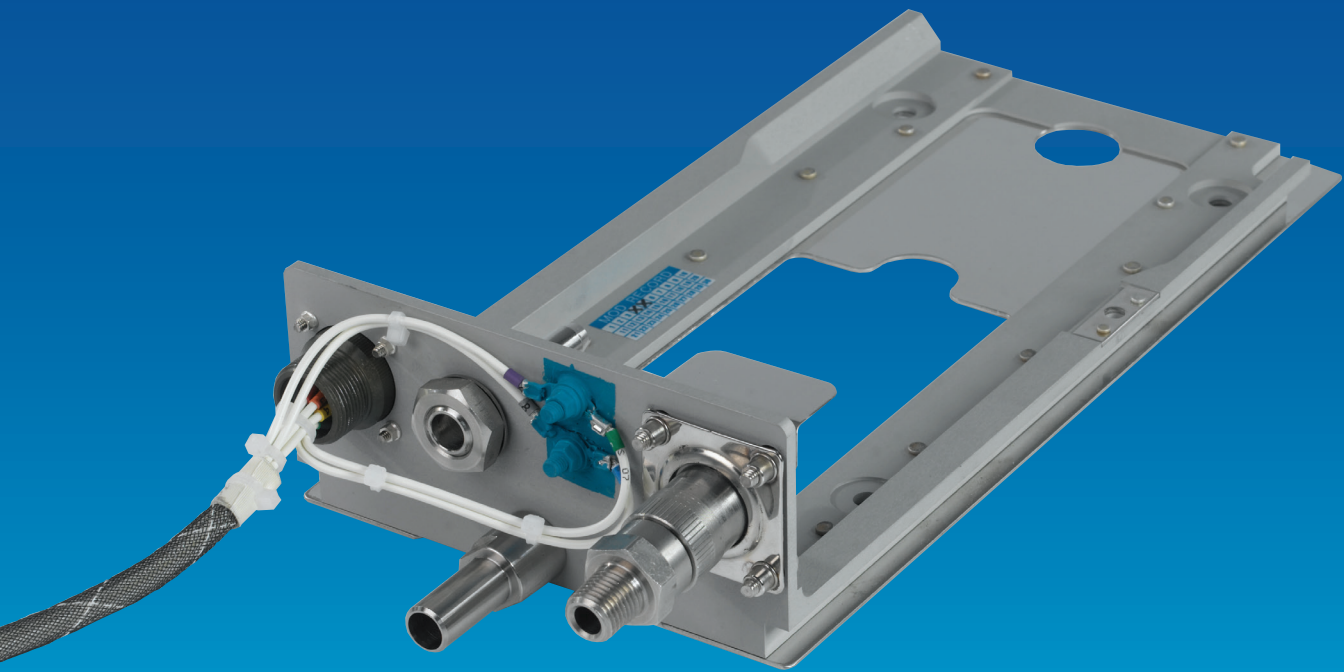


AL-RA15-001 Series

galley solutions  
worldwide

## Rail Assembly

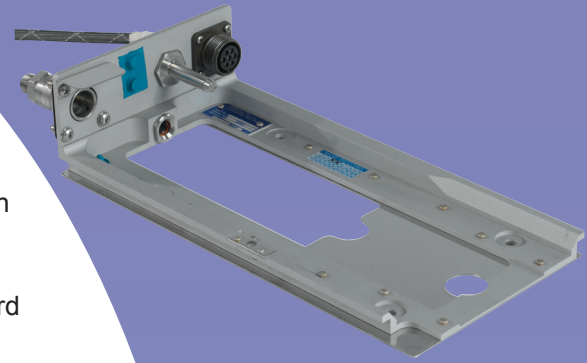


Aerolux Limited Aircraft Galley Equipment Manufacturers  
Chorley Road, Blackpool, Lancashire FY3 7XQ, England  
Tel +44 (0)1253 396670 Fax +44 (0)1253 300074  
Email [info@aerolux.co.uk](mailto:info@aerolux.co.uk) • [sales@aerolux.co.uk](mailto:sales@aerolux.co.uk)  
[www.aerolux.co.uk](http://www.aerolux.co.uk)



# AL-RA15-001 Series

- The **Rail Assembly** is designed for mounting beverage maker type equipment on-board commercial, commuter and corporate aircraft.
- Serves as a quick connect / disconnect interface for electrical power, fresh water and drain system for beverage and coffee makers.
- It is compatible with rail mounted AL-EX15-200E Series Espresso Coffee Makers and AL-GC200-03 Series Beverage Maker units and atlas standard beverage makers.
- The unit can easily be removed and reinstalled from the Rail Assembly without the use of special tools.
- Aluminium and stainless steel establish a rugged integral construction.
- A precision location spigot ensures accurate indexing of electrical and water connections.
- The electrical, water and drain interfaces are all individually configurable to suit any specific installation requirements.



## Characteristics

### Power Supply

115/200 V AC, 360-800 Hz, Three-Phase

Height	68.45mm (2.69")
Width	147.6mm (5.81")
Depth	297.63mm (11.71")
Empty Weight	1.1kg (2.4lbs)

## Performance

Water Inlet Pressure 0-50 psi

## Operational Range

### Ambient Temperature

15-35°C (cabin temperature)

### Altitude

0 to 15000ft (cabin pressure)

### Documentation:

ATA / iSpec 2200 CMM

### Release:

EASA Form 1 or Certificate of Conformity (COC)\* model dependant

\*EASA Form 1 can be provided by a DOA to POA Arrangement depending on commercial contract. Cost applicable.

## Interface details

### Electrical Connector

AC00R16S-1S / Flying Lead / MS24266R14B7PN

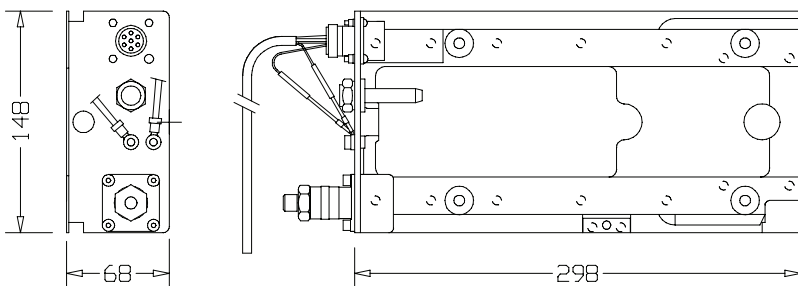
### Water Connector

Self-sealing (Hansen) 2-KL F16

### Mounting Attachment to Galley

via 4 x 1/4 bolts

## Outline drawing



**Caution:** Do not use the information contained in this document to perform installation design as this data is subject to change.